

Clarinet in Eb

ทยอยในเตา

พระนิพนธ์ใน สมเด็จพระเจ้าฟ้าบรมโพธิ์บรมพิตรสุริยวงษ์

ส่วนขึ้นตอน ๑

1

5

9

14

19

24

29

34

39

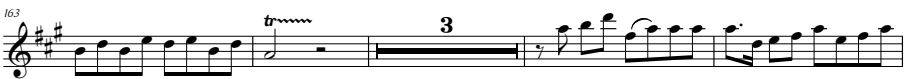
43

48

ทยอยไลดา
Clarinet in Eb



ทยอยไลดา
Clarinet in B \flat



ทยอยไลดา
Clarinet in Eb



ทยอยไลดา
Clarinete in Eb



ทยอยไลดา
Clarinet in Eb



ทอยโซดา Clarinet in Eb



ทยอยโยตา
Clarinet in Eb

ส่วนที่ ๒

Musical score for Clarinet in Eb, Part 2, measures 1-66. The score is written in treble clef with a key signature of two sharps (F# and C#) and a common time signature (C). The music consists of ten staves of notation. Measure numbers 4, 9, 14, 20, 25, 30, 37, 43, 50, 55, and 60 are indicated at the beginning of their respective staves. Trills are marked with 'tr' above notes in measures 9, 14, 25, 30, 37, 43, 50, 55, and 60. The score includes various rhythmic patterns, including eighth and sixteenth notes, and rests. A repeat sign is used at the end of the first staff and at the end of the eighth staff.

ทยอยไลดา
Clarinet in E \flat



ทยอยไมตา
Clarinete in Eb

สองขึ้นตอน ◦

4

9

14

19

25

31

38

44

49

54

58

ทยอยไลดา
Clarinet in Eb



ทยอยไลดา
Clarinet in Eb

116

121

126

132

138

145

151

156

161

167

172

178

ทยอยไลดา
Clarinet in Eb

สองขึ้นตอน ๒

6

11

16

22

28

35

40

45

50

ทยอยไลดา
Clarinet in Eb



ทยอยโยดา
Clarinet in Eb

ขึ้นด้วยมือ ๒

Musical score for Clarinet in Eb, measures 1-53. The score is written in treble clef with a key signature of one sharp (F#) and a common time signature (C). The music consists of ten staves of notation. Measure numbers 7, 13, 18, 23, 29, 35, 41, 48, and 53 are indicated at the beginning of their respective staves. The notation includes various rhythmic values, slurs, and trills. Trills are specifically marked with 'tr' and wavy lines above notes in measures 10, 11, 12, 36, 42, 43, 44, and 45. The piece concludes with a double bar line at the end of measure 53.